

# The Brooklyn Public Schools' DRAFT Reopening Plan for 2020-2021

The Brooklyn Public Schools has developed a DRAFT reopening plan in accordance with the Connecticut School Reopening Plan

*Adapt, Advance, Achieve: Connecticut's Plan to Learn and Grow Together.*



<b>Date of Submission:</b>	July 23, 2020
<b>LEA Name:</b>	Brooklyn Public Schools
<b>Reopening Plan Point of Contact:</b>	Patricia L. Buell
<b>Contact Email:</b>	buell@brooklynschools.org
<b>Contact Phone:</b>	860-774-9732 X1
<b>LEA COVID-19 Health and Safety Compliance Liaison:</b>	Mary Brennan, Brooklyn Elementary School Nurse Sherry MacFarland, Brooklyn Middle School Nurse
<b>Liaison Email:</b>	<a href="mailto:brennan@brooklynschools.org">brennan@brooklynschools.org</a> <a href="mailto:macfarland@brooklynschools.org">macfarland@brooklynschools.org</a>
<b>Revisions:</b>	7/29/2020

**Table of Contents**

<b>Message from the Superintendent</b>	<b>Page 3</b>
<b>Summary Document of Brooklyn's Three Reopening Models</b>	<b>Page 4</b>
<b>Fall Reopening Full In Person Instruction Transportation Parental Considerations</b>	<b>Page 5</b>
<b>Reopening under a Hybrid Model of Instruction Transportation Parental Considerations</b>	<b>Page 6</b>
<b>Distance/Remote Learning Plan Parental Considerations</b>	<b>Page 10</b>
<b>Parents' Choice for Distance/Remote Learning</b>	<b>Page 11</b>
<b>Child Nutrition</b>	<b>Page 12</b>
<b>Health Practices and Monitoring</b>	<b>Page 12</b>
<b>Reporting Illnesses</b>	<b>Page 12</b>
<b>Social Distancing/Physical Distancing</b>	<b>Page 12</b>
<b>Use of Face Coverings</b>	<b>Page 13</b>
<b>Containment Plan</b>	<b>Page 13</b>
<b>Cancellation of Classes</b>	<b>Page 13</b>
<b>Special Populations</b>	<b>Page 14</b>
<b>Brooklyn Elementary <a href="#">Plan</a> (to be attached)</b>	
<b>Brooklyn Middle School <a href="#">Plans</a> (to be attached)</b>	

Thank you to the many staff, parents, students, community members, local and state elected officials and many regional and State educational organizations for sharing your ideas, questions and suggestions which contributed to the DRAFT Brooklyn Public Schools' Reopening Plan.

## Message from the Superintendent

Dear Parents, Employees and Community Members:

This DRAFT plan has been created with multiple layers of stakeholder input. The Brooklyn Public Schools has been planning for the reopening since we had to pivot to distance learning on March 13, 2020. We are looking forward to having our students return to the physical classroom and rebuilding the connections we know are critical to the health and growth of our students and our community.

During the last three months of education we discovered just how resilient we can all be while engaging in distance learning. Everyone worked together to offer an education to each child through many different mediums. As educators we spend our days teaching and our evenings preparing to teach in a better way the next day. As we reopen, we would like to share our district priorities with you:

1. Create a healthy educational environment through cohorts and protocols
2. Connect with our students and support them from where they are
3. Address the emotional wellbeing of our students, families and staff
4. Understand that we have each had unique experiences over the last five months
5. Focus on wellness, equity, diversity, and social justice through the continued efforts to create a caring, educated and accepting school culture
6. Increase digital literacy to enhance the ability to quickly pivot to a hybrid or distance learning environment should that become necessary
7. We will be thoughtful and sensible as we assess the emotional and cognitive instructional needs of our students

Brooklyn will enforce mask wearing, mask breaks, social distancing, frequent handwashing and healthy hygiene, cohorting students and staff, increased cleaning and disinfecting to attempt to minimize the spread of the virus. We will ask each parent, child and staff member to carefully assess themselves to ensure that if you are sick or show symptoms of COVID that you remain home during a period of quarantine until you are well and can return to the education setting.

As we ramp up to open schools and later find it necessary to pivot to different models of instruction we will continually monitor and adjust to the needs of our students and staff as they focus on the mission of the Brooklyn Public Schools to foster a drive for learning within each student to reach his/her greatest potential. To achieve this mission, the school will continually improve its educational programs and services to meet this community's expectations for a quality education for all.

Updated documentation regarding the district's plan will be posted to the [Brooklyn Public Schools' Website COVID Resources](#), School Messenger and the [District Facebook Page](#).

Sincerely,

*Patricia L. Buell*

Patricia L. Buell

Superintendent

Thank you to the many staff, parents, students, community members, local and state elected officials and many regional and State educational organizations for sharing your ideas, questions and suggestions which contributed to the DRAFT Brooklyn Public Schools' Reopening Plan.

**Summary Document of Brooklyns' Three Reopening Models:**

The Brooklyn Public Schools will be prepared to pivot from one model of instruction to another as dictated by the spread of the virus. All models will include the requirement of healthy hygiene practices and follow CDC guidance with enhanced cleaning.

**Social emotional learning, social justice and digital literacy will be a focus of all three models.**

<b><u>In-Person Learning</u></b>	<b><u>Hybrid Learning</u></b>	<b><u>Distance/Remote Learning</u></b>
<p>All students return to school Monday-Friday from 9:15-3:15*.</p> <p>Students will be placed in cohorts, the same group of students all day long, and will receive instruction in the classroom, eat lunch in the classroom and receive specials/unified arts in the classroom. Subjects such as art, music, Spanish and PE will be taught via Zoom to decrease the risk of transmission of the virus.</p> <p>Students and staff will be required to wear masks all day in school. Students will have two scheduled breaks daily. They will be scheduled to go outside and remove their mask. Additionally, they will have lunch and recess without their masks. Students will be sitting behind a desk shield to reduce the transmission of germs during lunchtime.</p> <p>Students will be spread out at recess by grade level and will maintain social distancing at recess.</p>	<p>Each class will be split into two sections (A and B) to increase social distancing on buses and in classrooms. In person classes will be from 9:15-3:15*. Digital learning will be done at home using digital platforms and teacher provided assignments.</p> <p>Section A will attend classes in person two days/week and complete extension activities along with digital learning platforms for two days.</p> <p>Section B will attend two different days/week and complete extension activities along with digital learning platforms for two days.</p> <p>On the fifth day teachers will virtually engage with students and have office hours during a portion of the day.</p> <p>Students and staff will be required to wear masks all day and will be provided mask breaks.</p>	<p>Distance learning will include daily lessons in the core subject areas: language arts, mathematics, science and social studies.</p> <p>We have just completed three months of distance learning and we have ideas on how to improve it.</p> <p>Teachers will record live or mini lessons in each area and they will be presented to students via Zoom or Google Classroom. Students will be expected to complete assigned work remotely.</p> <p>Students will be required to be present for each assigned class daily Monday-Thursday. The schedule will be provided to families and all students will be present for classes.</p> <p>Friday's will consist of office hours which will give teachers an opportunity to meet with students and/or parents to answer questions about the work and offer individual assistance.</p>

**Parents' Choice for Distance/Remote Learning:** Parents may choose to have their child remain home and engage in distance learning during the in-person or hybrid learning models. Teachers will record mini lessons in each area and they will be presented to students via Zoom. Students will be expected to complete assigned work remotely. Students will not be assigned to a classroom but will have a case manager who will oversee their assignments. Families can continue to pick up meals during the hybrid and distance learning models.

This document is intended to serve as a summary of the highlights of the State required reopening plan. Thank you to the many parents, staff and community members who have contributed valuable questions and suggestions to support the development of the plan.

\*Due to the later opening, the Brooklyn Schools and Brooklyn Parks and Recreation are developing a plan to offer a low or no cost option that would allow parents to drop off their children at 8:30 AM. Early before and after school care will still be available for a fee through Brooklyn Parks and Recreation.

Thank you to the many staff, parents, students, community members, local and state elected officials and many regional and State educational organizations for sharing your ideas, questions and suggestions which contributed to the DRAFT Brooklyn Public Schools' Reopening Plan.

## Brooklyn Priorities

### **Fall Reopening Full In Person Instruction**

1. All students PK-grade 8 will return to school Monday-Friday 9:15-3:15. Students will be assigned to a cohort, a specific number of students and adults on a daily basis with the ability to contact trace as needed.
2. We intend to offer a healthy learning environment which focuses on the social emotional well being in a culturally sensitive classroom with academic instruction that meets the instructional needs of all students while increasing digital literacy should we need to move to a different model of instruction.
3. Students and staff will be socially distanced as much as possible: approximately 3-6' apart at desks in their classrooms. Students and teachers will be provided desk shields which will be useful when students are eating and have no mask on.
4. Students will be required to wash their hands upon entry and before eating lunch in grades PK-2. Hand sanitizing stations will be used when sinks are not available in the classroom. Student use of sanitizer is limited to grades 2-8 if they are unable to use soap and water for a minimum of 20 seconds. Specific requests to not use sanitizer can be made.
5. Four additional classrooms have been added, two at each school, to decrease class size and increase social distancing.
6. Students will remain in their classrooms except to go outside for mask breaks, recess and bathrooms as necessary.
7. Students will receive instruction in related arts such as music, art, PE, Spanish(gr 5-8) and STEAM through synchronous Zoom lessons.
8. Additional custodial staff will be added to the day shift to support the regular cleaning and disinfecting of high traffic areas and bathrooms at least twice daily.
9. Recess will be 25 minutes by grade level. Students will access different areas of the school grounds for recess. They will continue to encourage students to keep social distancing and allow them to take their masks off. Students will play with others in their cohorts.
10. Special education service and intervention services will be completed through the cohort model with certified and non-certified staff. While there would be the need to move in and out of some classrooms, we intend to do this with a finite number of staff. For example: a special education teacher and paraprofessional may share the same caseload of students and alternate weekly or every two weeks entering only one classroom. At the end of that rotation they would switch classrooms and service the students in the next room. Intervention services will be provided by the classroom teacher and other adult supports who may be assigned to the classroom that week. The smaller class sizes will allow for additional differentiated instruction to occur in the class, reducing the number of staff needed to enter the room or for the student to leave the room.
11. School health office and main office will restrict the flow of traffic to only essential visitors. Each of these offices will continue with the functions they have in the past, but communication will be done via phone, email or Zoom whenever possible.

Thank you to the many staff, parents, students, community members, local and state elected officials and many regional and State educational organizations for sharing your ideas, questions and suggestions which contributed to the DRAFT Brooklyn Public Schools' Reopening Plan.



12. Parent meetings such as PPT or 504 meetings will be conducted via Zoom whenever possible.
13. Instructional materials will be washed and disinfected whenever possible. Classroom book libraries will be used by students but they are difficult to wash. We are able to wipe down some materials better than others. In preschool we intend to have AM instructional materials and separate PM instructional materials if they are not able to be wiped down between sessions.

### **Transportation**

1. Parents may choose to transport their children to school and follow mask and social distance guidelines. They are asked to pick up and drop off students without entering the building.
2. Students who ride buses will be monitored by a paraprofessional and reminded to wear masks, board filling the back seats first and deboard from the front of the bus.
3. Bus lists will be made based on maximizing social distancing on the bus.
4. Buses will be wiped down between the high school tier and elementary/middle school tiers.

### **Parental Considerations**

1. It is critical to the overall health and well being of our students and staff that every parent and employee self-check for COVID symptoms: fever or chills, cough, shortness of breath or difficulty breathing, fatigue, muscle or body aches, headache, new loss of taste or smell, sore throat, congestion or runny nose, nausea or vomiting, or diarrhea. If you or your child is experiencing any of these symptoms, they should stay home and consult with the school nurse or physician. It is likely that you will need to quarantine for 10-14 days to ensure that these symptoms do not indicate the presence of the virus.
2. Students who are ill during the day with symptoms listed above will be isolated while parents are called. Students could be asked to quarantine at home for 10-14 days to ensure that they do not spread the virus unknowingly. It will be critical to work closely with the school nurse to determine recommendations by the Northeast District Department of Health who will interpret the CDC guidelines and assist us with determinations if needed.
3. We understand that students have multiple cohorts. Each child has a family cohort and depending on the family that cohort size may be large or small, consistent or varied. Students will have a morning bus cohort and an afternoon bus cohort. They may have a before school care or after school care cohort. We are trying to limit the number of students in a cohort so that if a member of the cohort becomes ill, there will be fewer people who need to be quarantined. Cohorting is important to keep the transmission rate low. We know that northeastern CT has low rates and the longer it stays low, the better chance we have to remain in school engaged in face to face instruction.
4. Sharing of instructional materials is a focus for every classroom. It is important that each child have a ziplock baggie of their own materials and a place to properly store their mask when they are not using it.
5. The younger students may have more difficulty maintaining social distance and not sharing instructional toys. As young children, learning is about exploration of objects and provided through active learning plans. Parents must be aware while there will be social distancing in some areas, it may be more challenging to promote social distancing and separate instructional tools for each child.

Thank you to the many staff, parents, students, community members, local and state elected officials and many regional and State educational organizations for sharing your ideas, questions and suggestions which contributed to the DRAFT Brooklyn Public Schools' Reopening Plan.

6. Due to the 45 minute later than usual start time, The Brooklyn Public Schools are exploring an opportunity to offer free or low cost before school care for students from 8:30-9:15. We will identify if there are parents who need this service in order to return to work.

**Reopening Under a Hybrid Model of Instruction:**

1. Should the spread of the virus result in the need to increase social distancing both in school and on the bus, the District may pivot to a hybrid model of instruction. This determination will be made in conjunction with the Northeast District Department of Health (NDDH) who is aware of the suspected and confirmed cases of COVID as well as the specific cases within the Brooklyn Public Schools.
2. In person school will be two days/week from 9:15-3:15 with three days of distance learning. Students will be part of a smaller cohort with the ability to contract trace if needed. Teachers will teach one half of their class for two days in person and the other half of their class two different days. Teachers will only be available during the instructional day to the students in their classroom. A different staff member will assist or trouble shoot for students working from home.
3. The hybrid model of instruction will consist of AA BB schedule. Each class will be divided into an A section and a B section. Students will each attend two days/week while they engage in distance learning the other 3 days.
4. Students will be sorted into A or B sections at the beginning of the school year so that they will know what section they will attend should this happen. Families will be grouped together to ensure that siblings are all at school or at home on the same day.
5. Teachers will be required to teach students who are in the classroom. We will provide a schedule to students who are at home that they are required to check in at a specific time. Someone other than the classroom teacher, likely a paraprofessional will be responsible to take attendance and provide assistance to students who will access digital learning platforms from home.
6. The fifth day will consist of an opportunity for teachers and students to work together on a small group basis, as needed. Other students will engage in extension learning activities such as reading, writing and outdoor activities. Our goal would be to minimize screen time on the fifth day of school.
7. We will continue to work with designated high schools and other schools in the area in an attempt to align with our schedule with them. This means we may have AA Wednesday all students home BB day; or AA BB Friday all students home.
8. We intend to offer a healthy learning environment which focuses on the social emotional well being in a culturally sensitive classroom with academic instruction that meets the instructional needs of all students while increasing digital literacy should we need to move to a different model of instruction.
9. Students and staff will be socially distanced as much as possible but a minimum of 6' apart at desks in their classrooms. Students and teachers will be provided desk shields which will be useful when students are eating and have no mask on.

Thank you to the many staff, parents, students, community members, local and state elected officials and many regional and State educational organizations for sharing your ideas, questions and suggestions which contributed to the DRAFT Brooklyn Public Schools' Reopening Plan.

10. Students will be required to wash their hands upon entry and before eating lunch. Hand sanitizing stations are available to adults who are unable to wash hands. Student use of sanitizer is limited to a rare exception that they are unable to use soap and water for a minimum of 20 seconds.
11. All classrooms under the full in person instructional model will be split into two sections.
12. Students will remain in their classrooms except to go outside for mask breaks, recess and bathrooms as necessary.
13. Students will receive instruction in related arts such as music, art, PE, Spanish (gr 5-8) and STEAM through synchronous Zoom lessons.
14. Additional custodial staff will be added to the day shift to support the regular cleaning and disinfecting of high traffic areas and bathrooms at least twice daily.
15. Recess will be 25 minutes by grade level. Students will access different areas of the school grounds for recess. They will continue to encourage students to keep social distancing and allow them to take their masks off. We are determining how to encourage play with students in their cohorts.
16. Special education service and intervention services will be completed through the cohort model with certified and non-certified staff. While there would be the need to move in and out of some classrooms, we intend to do this with a finite number of staff. For example: a special education teacher and paraprofessional may share the same caseload of students and alternate weekly or every two weeks entering only one classroom. At the end of that rotation they would switch classrooms and service the students in the next room. Intervention services will be provided by the classroom teacher and other adult supports who may be assigned to the classroom that week. The smaller class sizes will allow for additional differentiated instruction to occur in the class, reducing the number of staff needed to enter the room or for the student to leave the room.
17. School health and main offices will restrict the flow of traffic to only essential visitors. Each of these offices will continue with the functions they have in the past, but communication will be done via phone, email or Zoom whenever possible.
18. Parent meetings such as PPT or 504 meetings will be conducted via Zoom whenever possible.
19. Instructional materials will be washed and disinfected whenever possible. Classroom book libraries will be used by students but they are difficult to wash. We are able to wipe down some materials better than others. In preschool we intend to have AM instructional materials and separate PM instructional materials if they are not able to be wiped down between sessions.

### **Transportation**

1. Parents may choose to transport their children to school and follow mask and social distance guidelines. They are asked to pick up and drop off students without entering the building.
2. Students who ride buses will be monitored by a paraprofessional and reminded to wear masks, board filling the back seats first and deboard from the front of the bus.
3. Bus lists will be made based on maximizing social distancing on the bus, likely 12-18 students per bus.
4. Buses will be wiped down between the high school tier and elementary/middle school tiers.

Thank you to the many staff, parents, students, community members, local and state elected officials and many regional and State educational organizations for sharing your ideas, questions and suggestions which contributed to the DRAFT Brooklyn Public Schools' Reopening Plan.



### **Parental Considerations**

1. It is critical to the overall health and well being of our students and staff that every parent and employee self-check for COVID symptoms: fever or chills, cough, shortness of breath or difficulty breathing, fatigue, muscle or body aches, headache, new loss of taste or smell, sore throat, congestion or runny nose, nausea or vomiting, or diarrhea. If you or your child is experiencing any of these symptoms, they should stay home and consult with the school nurse or physician. It is likely that you will need to quarantine for 10-14 days to ensure that these symptoms do not indicate the presence of the virus.
2. Students who are ill during the day with symptoms listed above will be isolated while parents are called. Students could be asked to quarantine at home for 10-14 days to ensure that they do not spread the virus unknowingly. It will be critical to work closely with the school nurse to determine recommendations by the Northeast District Department of Health who will interpret the CDC guidelines and assist us with determinations if needed.
3. We understand that students have multiple cohorts. Each child has a family cohort and depending on the family that cohort size may be large or small, consistent or varied. Students will have a morning bus cohort and an afternoon bus cohort. They may have a before school care or after school care cohort. We are trying to limit the number of students in a cohort so that if a member of the cohort becomes ill, there will be fewer people who need to be quarantined. Cohorting is important to keep the transmission rate low. We know that northeastern CT has low rates and the longer it stays low, the better chance we have to remain in school engaged in face to face instruction.
4. Sharing of instructional materials is a focus for every classroom. It is important that each child have a ziplock baggie of their own materials and a place to properly store their mask when they are not using it.
5. The younger students may have more difficulty maintaining social distance and not sharing instructional toys. As young children, learning is about exploration of objects and provided through active learning plans. Parents must be aware while there will be social distancing in some areas, it may be more challenging to promote social distancing and separate instructional tools for each child.
6. Due to the 45 minute later than usual start time, The Brooklyn Public Schools are exploring an opportunity to offer free or low cost before school care for students from 8:30-9:15. We will identify if there are parents who need this service in order to return to work.
7. During distance learning it is critical that students understand they are required to check into classes and be present. They are to complete the school work. If you as the parent needs assistance, please reach out to the classroom teacher. Every child performs differently and it is critical that if you are having difficulty or if the work is taking too long to complete at home, we want to know. Please reach out to the classroom teacher and let them know. Sometimes the best plans are not always the best when delivered in the home. We do not want to stress you or your child. Please stay in contact with the classroom teacher.
8. The school counselors and social workers are available to you should you need to consult with them about an issue that a child is facing at home.

Thank you to the many staff, parents, students, community members, local and state elected officials and many regional and State educational organizations for sharing your ideas, questions and suggestions which contributed to the DRAFT Brooklyn Public Schools' Reopening Plan.

### **Distance/Remote Learning Plan**

1. Distance/Remote learning will be the means of instruction should the virus be widespread and in person learning becomes a high enough risk that the State orders a stay put order again. This decision will be made in coordination with the Northeast District Department of Health and could be made sooner if Brooklyn or the northeast area of CT becomes a hotspot.
2. Each student who needs a device will be provided a district issued Chromebook. All Chromebooks will be operated under the guidelines of the Brooklyn Public Schools and will be inaccessible after 6:00PM. We encourage students and families to be active and engage in fun learning opportunities together. During a Stay at Home Order, we need to ensure that students are connecting with loved ones and are engaged in meaningful discourse on a daily basis.
3. Distance learning will include daily lessons in the core subject areas: language arts, mathematics, science, social studies and related arts.
4. Teachers will offer live or recorded mini lessons in each area and they will be presented to students via Zoom or Google Classroom. Students will be expected to use a common platform to access their instruction and will be expected to be present for the start of each class session. Teachers will take attendance.
5. Students will be expected to complete assigned work remotely and assignments, class participation and attendance will be reflected in the grades.
6. Students will be required to be present for each assigned class daily Monday-Thursday. The schedule will be provided to families and all students will be present for classes.
7. Daily contact with the teacher will be part of the instructional model for both general education students as well as special education students.
8. Friday's will consist of office hours which will give teachers an opportunity to meet with students and/or parents to answer questions about the work and offer individual assistance.

### **Parental Considerations:**

1. During distance learning it is critical that students understand they are required to check into classes and be present. They are to complete the school work. If you as the parent needs assistance, please reach out to the classroom teacher. Every child performs differently and it is critical that if you are having difficulty or if the work is taking too long to complete at home, we want to know. Please reach out to the classroom teacher and let them know. Sometimes the best plans are not always the best when delivered in the home. We do not want to stress you or your child. Please stay in contact with the classroom teacher.
2. The school counselors and social workers are available to you should you need to consult with them about an issue that a child is facing at home. School nurses are also available to families but in the event of an emergency, families should call 911 for medical emergencies and 211 for other family or wellness matters.
3. During distance learning it is critical that students understand they are required to check into classes and be present. They are to complete the school work. If you as the parent needs assistance, please reach out to the classroom teacher. Every child performs differently and it is critical that if you are having difficulty or if the work is taking too long to complete at home,

Thank you to the many staff, parents, students, community members, local and state elected officials and many regional and State educational organizations for sharing your ideas, questions and suggestions which contributed to the DRAFT Brooklyn Public Schools' Reopening Plan.

we want to know. Please reach out to the classroom teacher and let them know. Sometimes the best plans are not always the best when delivered in the home. We do not want to stress you or your child. Please stay in contact with the classroom teacher.

**Parents' Choice for Distance/Remote Learning**

1. Parents may choose to have their child remain home and engage in distance learning during the in-person or hybrid learning models.
2. Classroom teachers will record mini lessons in each area and they will be presented to students via Zoom.
3. Students will be expected to complete assigned work remotely.
4. Students will not be assigned to a classroom but will have a case manager who will oversee their assignments. Classwork, class participation and attendance will be graded used to determine grades.
5. Families can continue to pick up meals during the hybrid and distance learning models.

**Child Nutrition**

<p><b>In-Person Learning</b></p> <ul style="list-style-type: none"> <li>-Students will be provided meals in their classrooms.</li> <li>-Students will be required to wash their hands before eating.</li> <li>-Once seating with their lunch, and with their desk shield up, they may remove their mask to each lunch.</li> <li>-The classroom will be monitored by the same staff member daily. This person will be considered part of their cohort for contract tracing purposes.</li> <li>-At this time, students will be required to pay full, reduced or may be eligible for free meals based on eligibility status.</li> </ul>	<p><b>Hybrid Learning</b></p> <ul style="list-style-type: none"> <li>-When in school: students will be provided lunches in their classrooms.</li> <li>-Students will be allowed to pick up meals for the days that they are not in session.</li> <li>-At this time, students will be required to pay full, reduced or may be eligible for free meals based on eligibility status.</li> </ul>	<p><b>Distance/Remote Learning</b></p> <p style="text-align: center;">OR</p> <ul style="list-style-type: none"> <li>-Meals will continue to be available for parents who choose to have their students engage in distance learning.</li> <li>-The schedule will be published once finalized.</li> <li>-At this time, students will be required to pay full, reduced or may be eligible for free meals based on eligibility status.</li> </ul>
--	--	---

Thank you to the many staff, parents, students, community members, local and state elected officials and many regional and State educational organizations for sharing your ideas, questions and suggestions which contributed to the DRAFT Brooklyn Public Schools' Reopening Plan.

### **Health Practices and Monitoring**

1. It is essential that every parent and employee follow all CDC guidelines in order to keep our schools healthy and open. We need your help!
2. Temperatures will not be taken for all students and employees entering the building. We are depending on each parent and employee to monitor this and if you or your child has a fever of 100 degrees that you stay home. Touchless thermometers will be available and used if there is any question about fever.
3. Visitors to the buildings who have a critical need to enter the building must use the hand sanitizer and sanitize their hands. They will then be asked to use the sanitized touchless thermometer and take their temperature upon entry. No one with a fever of 100 degrees or higher will be allowed to enter the building.
4. All people in the schools will be required to wear a mask at all times, unless they are working alone at their own workspace. Examples of this are if a teacher is sitting at their desk before or after school hours they may remove their mask. Anytime they move about the room or building they will be required to wear a mask. Custodians will wear a mask and gloves at all times. They are permitted to remove their mask when working in their own work closets. Paraprofessionals will wear their mask at all times. If they are removed when monitoring recess, they must be put back on when assisting or speaking with a child. Bus monitors must wear their masks at all times while riding on the bus. Paraprofessionals who provide physical assistance School nurses will wear a mask and gloves at all times when dealing with students or staff. Additional PPE is available if there is a suspected case of COVID including gowns and goggles. Cafeteria staff must wear masks and gloves at all times. They may remove their mask if they are outside, away from the door, and not handling food or materials associated with food. Office staff may remove their mask if they are in their own office working alone. They must wear a mask anytime there is someone in their office space or if they leave their office.
5. **Isolation rooms** have been set up for any child or adult who may demonstrate COVID symptoms. This room will only be used for those who are suspected to have COVID and are being dismissed. They will be monitored and held in this location until they are picked up by a parent or guardian.
6. Cleaning will be done daily. Anyone cleaning will be expected to wear gloves and a mask. Bathrooms and high traffic areas will be cleaned and sanitized at least twice daily.

### **Reporting Illnesses**

1. Parents need to report to the school nurse if they are keeping their child home sick with COVID symptoms so that we are able to monitor other students and staff in the cohort.
2. If a student or staff in the cohort becomes ill we will inform families while maintaining HIPAA guidelines.
3. The school nurse will communicate with families regarding the length of time that a student must quarantine.
4. The school nurse will communicate with the Northeast District Department of Health regarding identified and suspected cases of COVID and collaborate to determine response to suspected cases and contact tracing.

Thank you to the many staff, parents, students, community members, local and state elected officials and many regional and State educational organizations for sharing your ideas, questions and suggestions which contributed to the DRAFT Brooklyn Public Schools' Reopening Plan.

### **Social Distancing/Physical Distancing**

1. Physical distancing is required to mitigate the spread of disease. We understand that while students need to be physically distant we realize the challenge of social distancing.
2. Social distancing/physical distancing is one of the major mitigation strategies that is being used during the reopening of schools.

### **Use of Face Coverings**

1. CDC Guidance regarding face coverings: COVID-19 spreads mainly from person to person through respiratory droplets produced when an infected person coughs, sneezes, talks, or raises their voice (e.g., while shouting, chanting, or singing). These droplets can land in the mouths or noses of people who are nearby or possibly be inhaled into the lungs. Recent studies show that a significant portion of individuals with COVID-19 lack symptoms (are “asymptomatic”) and that even those who eventually develop symptoms (are “pre-symptomatic”) can transmit the virus to others before showing symptoms.
2. To reduce the spread of COVID-19, CDC recommends that people wear cloth face coverings in public settings when around people outside of their household, especially when other social distancing measures are difficult to maintain.
3. The language of the CDC states “recommends” but the requirement of schools reopening is that all students and staff are required to wear face coverings that completely cover the nose and mouth.

### **Containment Plan**

1. Each school building has a containment plan which includes coordination and training with local DPH.
2. The district has an articulated plan to [respond to suspected cases of COVID](#) in accordance with NDDH recommendations and a location to contain or reduce the exposure to others including proper PPE.
3. Proper clearing is in compliance with CDC guidelines.

**Cancellation of Classes:** Classes will be cancelled if there is a medical reason to cancel. If the classroom needs to be quarantined due to a suspected case of COVID, the teacher will pivot to distance learning unless they are out sick.

### **Operations:**

1. All classrooms will be required to leave a window open for fresh air to circulate into the classroom and out through the exhaust. Classroom fans may only blow air out the window.
2. Hallways will be labeled with arrows indicating direction for traffic. The use of floor decals, or paint on the sidewalks will assist students who are waiting in a line to enter a room/building or a bus.
3. Multiple building entrances will be used to increase physical distances at arrival and dismissal for both parent and bus drop off and pick up.
- 4.

Thank you to the many staff, parents, students, community members, local and state elected officials and many regional and State educational organizations for sharing your ideas, questions and suggestions which contributed to the DRAFT Brooklyn Public Schools' Reopening Plan.



**Special Populations**

**Special Education:** In addition to the Brooklyn Public Schools guidelines outlined in the reopening plan, we are prepared to support students with disabilities through the following models.

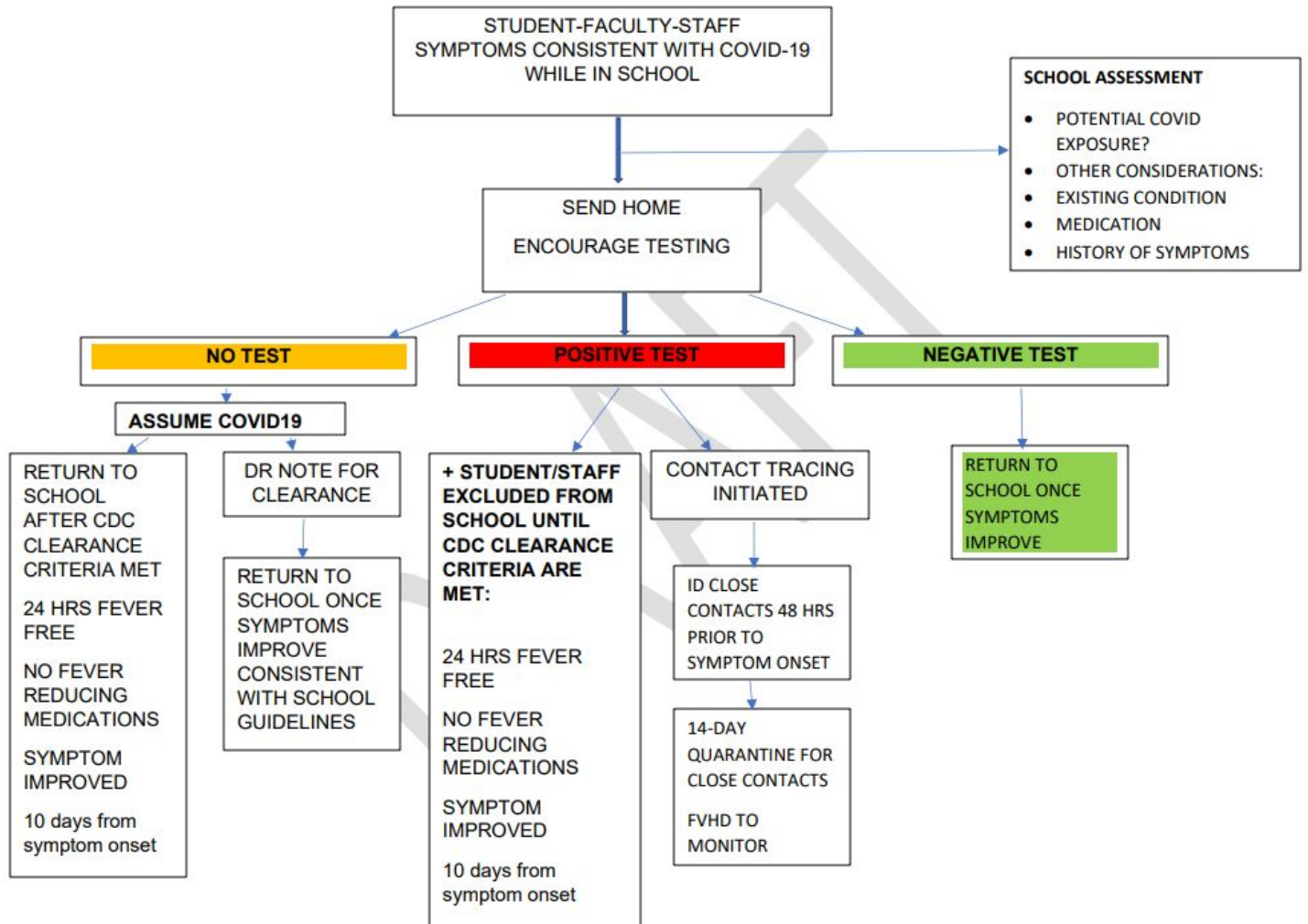
<b>In-Person Learning</b>	<b>Hybrid Learning</b>	<b>Distance/Remote Learning</b>
<ul style="list-style-type: none"> <li>-Students will be placed into cohorts within the regular education classroom.</li> <li>-We will use a co-teaching model to support cohorts and social distancing. A dedicated special education teacher will co-teach with 2 regular education teachers per grade level. A dedicated paraprofessional will also be included in these 2 cohorts for student support. The special education teacher and the paraprofessional will alternate classrooms on a weekly basis, so that each classroom always has support.</li> <li>-The special education teacher, regular education teacher and paraprofessional will collaborate weekly on student programming.</li> <li>-The special education teacher will oversee the paraprofessional in the delivery of service.</li> <li>-Students who require pull out services to address their goals and objectives will be able to go to a dedicated classroom that is only used for students within these 2 cohorts.</li> <li>-Preschool students will be placed in a regular education classroom with a dually certified teacher. All preschool students will receive all services in the regular education classroom.</li> </ul>	<ul style="list-style-type: none"> <li>-Students will be assigned to section A or section B as outlined in the Brooklyn Public Schools Reopening Plan.</li> <li>-We will continue to use a co-teaching model as outlined in the <i>in-person learning</i> model for the days of in person learning.</li> <li>-During the two days of digital learning students will engage with extension activities along with digital learning platforms as appropriate for their individual needs.</li> <li>-On the fifth day the special education teacher will join the virtual class to engage with students and have office hours for a portion of the day.</li> </ul>	<ul style="list-style-type: none"> <li>-During distance learning the special education teacher will join the general education teacher during regularly scheduled Zoom classes that align to the IEP Goals and objectives.</li> <li>-The special education teacher will meet directly with students on a regular basis through Zoom to ensure goals and objectives are addressed.</li> <li>-Individual or small group lessons will be offered as determined by the teacher and family.</li> </ul>

-All PPT meetings will be held through a video chat platform. All team members will join the video chat from their offices or classrooms to ensure social distancing and to avoid mixing cohorts. Families may join the PPT through video chat or by phone.

**English Language Learners (EL)** EL students will be supported in classrooms with instructional resources that teach English across all content areas while supporting culturally responsive classrooms. This learning will be enhanced with the use of technology platforms.

Thank you to the many staff, parents, students, community members, local and state elected officials and many regional and State educational organizations for sharing your ideas, questions and suggestions which contributed to the DRAFT Brooklyn Public Schools' Reopening Plan.

Appendix  
Draft NDDH Guidelines for Student-Faculty-Staff In Schools



Thank you to the many staff, parents, students, community members, local and state elected officials and many regional and State educational organizations for sharing your ideas, questions and suggestions which contributed to the DRAFT Brooklyn Public Schools' Reopening Plan.